

# Penny.



E: sales@qcg.co.nz | W: www.qcg.co.nz | P: 0800 525 585



The Penny mosaic is a popular and highly effective mosaic with stunning aesthetics as a feature or in complete installations. Available in a collection of tones to suit many decors. Suitable for both floor and wall.

**PRODUCT TYPE:** Glazed Porcelain

**COLOURS:** See colour options overleaf

**SIZES<sup>(1)</sup>:** See overleaf

**SURFACES:** Gloss/Matt

**EDGES:** Pressed

**USAGE:** Floors and Walls

**TECHNICAL INFO:** See overleaf

**VARIATION<sup>(3)</sup>:** V2

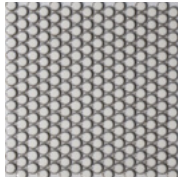
**WARRANTY<sup>(3)</sup>:** 15 Years

**ORIGIN:** China

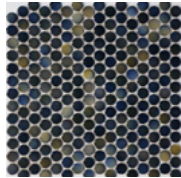
(1) Sizes are nominal and may include a grout joint. (2) Variation is an inherent property of tiles and stone. (3) If further details are required regarding our warranty or terms please contact our team on sales@qcg.co.nz or 0800 525 585

# Penny.

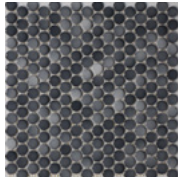
## COLOURS:



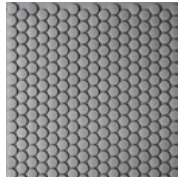
Old White



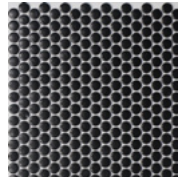
Ocean



Grey Marl



White Matt



Black Matt

## SIZES:



324x310 (Black Matt & White Matt)



290x295 (Ocean, Grey Marl & Old White)

## TECHNICAL CHARACTERISTICS STANDARD VALUE

Compliant with standards EN 14411 annex G group Bla. Compliant with standards ISO 13006 annex G group Bla.

	Water absorption	EN ISO 10545-3	<0.1%
	Frost Resistance	EN ISO 10545-12	✓
	Chemical resistance	EN ISO 10545-13	✓
	Size variation	EN ISO 10545-2	+/- 0.25%
	Thickness	-	6mm
	Hardness (MOHS)	EN 101	3
	Slip resistance	AS/NZS 4586:2013	-
	Breaking Strength	EN ISO 10545-4	-